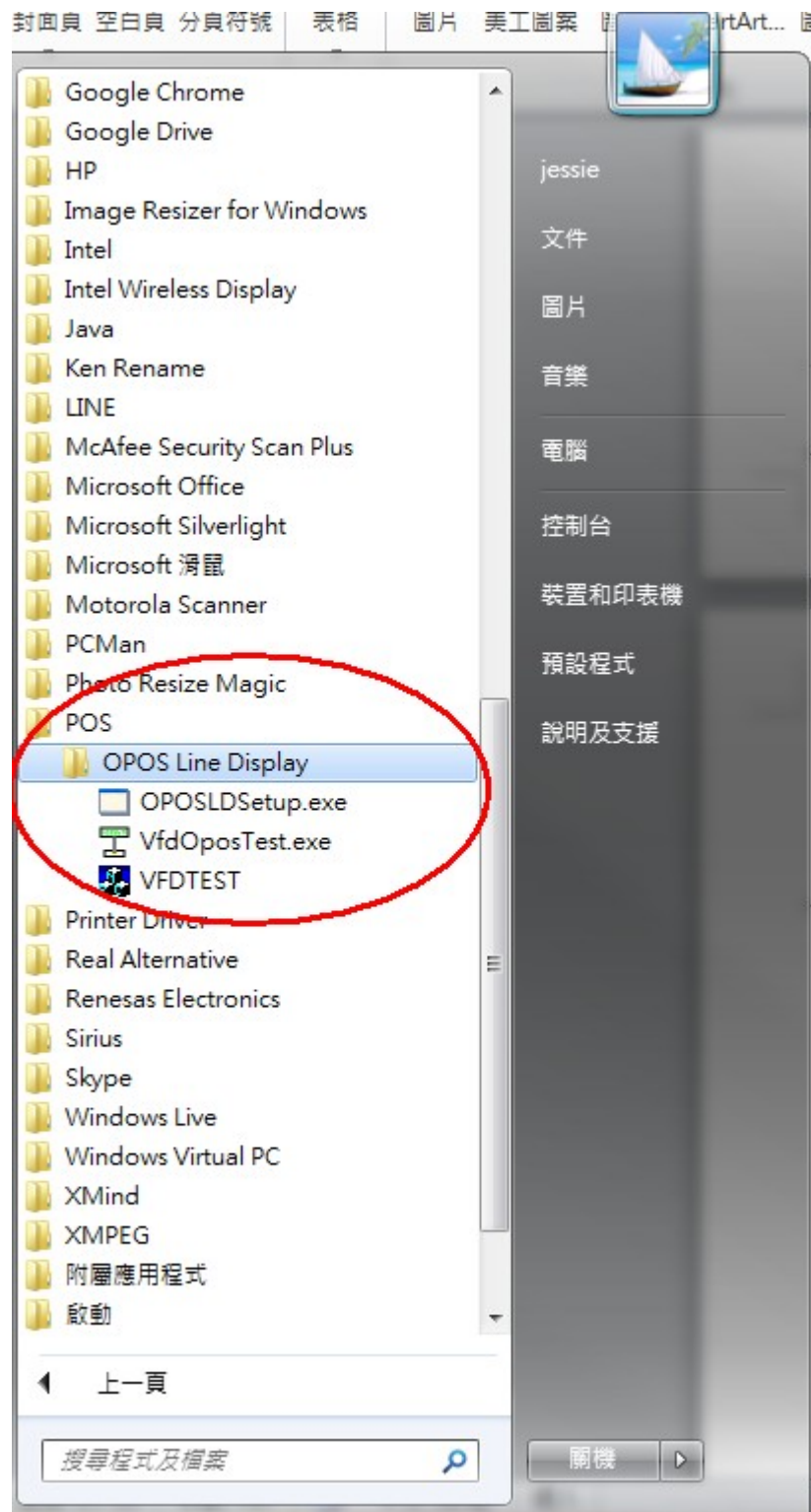


LD230 OPOS Utility

Test Manual

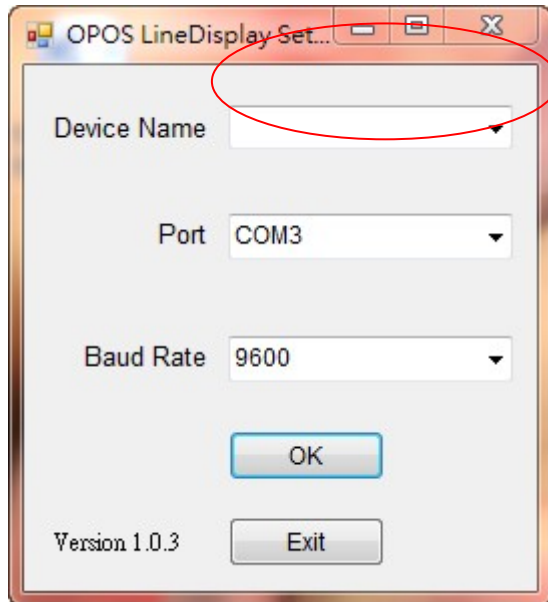
Step 1 Install OPOS Driver EXE file

After you finished the installation of OPOS Driver, you will find "POS" file folder in program file like this:



Step 2: double-clicking the “OPOS LDSetup.exe” to register the device

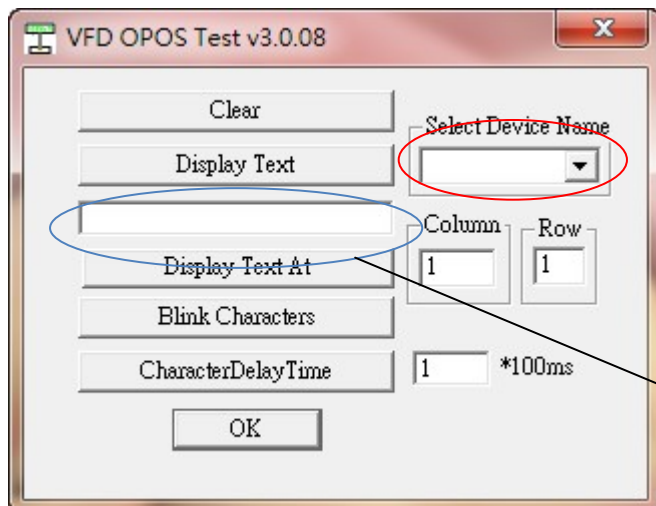
1. Please select “LD230” in the Device Name, if there is no LD230 shown up, you can also enter “LD230” by yourself.
2. Select your com port and correct baud rate.
3. Click “OK” to applied the setting.
4. Click “Exit” to close this Utility.



Select or enter “LD230” here.

Step 3: double-clicking the “VfdOposTest.exe” to start the testing

1. Please make sure you have already closed the “OPOS LDSetup.exe” Utility.
2. Select “LD230” at the Coolum “Select Device Name”.
3. Enter any text in the column and clicking the “Display Text” to send your text to device.



Select or enter “LD230” here.

Enter your text here.

*****finished*****